

# CIMPLICITY 11.1 from GE Digital



Precisely monitor and control every aspect of industrial operations with centralized, remote & mobile innovation

## Enable centralized, remote and mobile operations to increase efficiency and uptime

As a proven automation platform, CIMPLICITY from GE Digital provides true client/server visualization and control – from single machines to plant locations spanning the world – helping you manage your operations and improve decision-making.

Based on decades of research and development and part of the Proficy family from GE Digital, CIMPLICITY is the HMI/SCADA of choice for the world's largest manufacturers and utilities. For applications of all sizes, CIMPLICITY can help deliver faster response, reduced costs, and increased profitability.

Our latest version features integration with Proficy Operations Hub, facilitating centralized, remote and mobile operations to enable improved access to information and control to support site management, increasing efficiency and reducing downtime. CIMPLICITY also significantly reduces time-to-value with Rapid Application Development tools including OPC UA auto-discovery, enhanced mimic-building tools and libraries, and REST APIs for remote configuration.

### Outcomes

- Speed problem detection and response with ISA and GE research-based design concepts for High Performance HMI
- Reduce time-to-value with Rapid Application Development tools including SCADA web configuration and object-oriented design
- Improve decision-making with richer information in context, supported by modeled data
- Reduce threat of cyber attacks with certificate-based communications and secure configuration guidance (Achilles Practices/IEC 62443)
- Minimize maintenance time and costs with zero deployment clients
- Enable superior design flexibility for consumption of third-party HTML5 content
- Boost security and reliability with the latest operating system and database updates, including Microsoft Windows Server 2019 support

## 01 Decrease operator response time and errors with High Performance HMI/SCADA

CIMPLICITY changes the HMI experience to enable decision support for the user. The overall HMI layout is designed to provide users with the most informed, personalized view of the problem or task at hand – for faster response and fewer errors. Additionally, sophisticated alarm management and escalation capabilities can assist operators to see and act on the alarms that matter, improving efficiency and reducing risk.

## 02 Drive faster time-to-value with Rapid Application Development (RAD) tools

Deploy solutions faster with powerful new RAD tools including OPC UA auto-discovery, which significantly speeds database creation from OPC UA data sources. Our latest version also introduces a Classes/Objects browser for animations and expressions and improves Smart Object building capabilities with enhancements to reduce or eliminate scripting. With CIMPLICITY, you can employ object-oriented design for easy repeatability and faster time-to-value through modeled context. You can use classes and objects to build a structured database quickly. Modeling capabilities in CIMPLICITY allow you to create templated applications for repeatable assets, further speeding configuration.

## 03 Achieve visualization where you need it

CIMPLICITY screens through Proficy Operations Hub and Webspaces are full HTML5 compliant and support responsive design concepts. The displays support multi-touch and scale to various form factors and orientations where the HMI will be viewed from small to large screens.

## 04 Leverage standards for IoT interoperability

CIMPLICITY delivers a standards-based open ecosystem for superior interoperability and the foundation for IoT. CIMPLICITY reflects GE Digital's commitment to OPC UA, ISA 18.2, ISA 101, and more.



With thousands of installations, CIMPLICITY offers trusted performance, reliability, one of the richest HMI/SCADA feature sets, and edge-to-cloud innovation from GE Digital.

## 05 Improve connectivity, security, and reliability across your entire operations

With OPC UA Server support for modeled data, CIMPLICITY helps you aggregate systems for a single connection to your SCADA and consolidated views. Additionally, CIMPLICITY's Global Discovery Server reduces threats from cyber attacks with overall certificate-based communication. Robust coding practices and secure configuration guidance (Achilles Practices/IEC 62443) make CIMPLICITY the SCADA of choice to help meet the most demanding security requirements.

*“Using GE Digital’s software has enabled us to demonstrably increase productivity and significantly improve the process quality. The software facilitates the daily work of our staff.”*

Martin Siegenthaler, Process Automation and System Support, Blaser Swisslube AG

# CIMPLICITY 11.1 from GE Digital



Precisely monitor and control every aspect of your industrial operations with High Performance HMI/SCADA

## Features

### New in Versions 11 and 11.1

- Proficy Operations Hub integration, facilitating centralized, remote and mobile operations
- OPC UA auto-discovery: Connect to OPC UA servers utilizing Global Discovery Server, browse UA server namespace, multi-select variables to create CIMPLICITY database (offline or dynamic)
- Reduce/eliminate scripting: open/overlay screen variable assignment by value, text animation writing to a variable, variable assign procedures, function to retrieve Terminal Services Session ID, faceplate options (remove system menu, pinning), tooltips (justification, multi-line, rounded corners)
- Enhanced expression functions (Time, shape, text formatting) & class browsing for expression building
- SQL AlwaysOn support for high availability
- Script execution threading to boost performance
- Other: Enhancements to alarm setup and Change Approval, CIMPLICITY online Help/documentation, database storage for status logs, Windows Server 2019 and SQL 2019 support

### Proven, Multi-Purpose HMI/SCADA

#### Efficient Operations

- Alarm management and escalation
- Work process management
- Production tracking
- SPC, recipe, incident playback (DGR)
- Device connectivity
- High availability

#### Powerful Development Tools

- Design library
- Database model-based design (Classes/Objects)
- Extensibility (VB, .NET, Rich APIs)
- Open standards (ISA, IEC, OPC)

#### Highly Scalable

- Small systems to large (>500K) point count
- Enterprise server

### Other Features

- High Performance HMI for efficiency
- Never start with a blank sheet of paper, improve efficiency by starting with a model
- Native Web HMI structured asset model mapped to CIMPLICITY's objects and classes
- OPC UA for structured data and secure-by-design interoperability, including the OPC UA server for consolidated data in context to the model with certificate management
- High availability: Host redundancy, Windows cluster support, dynamic configuration, support for high availability hardware
- Secure by design: Secure Configuration Guide (Achilles Practices/IEC 62443), Global Discovery Server and certificate management
- Local, remote over LAN, WAN, or Internet connections including VPN

## Software Requirements

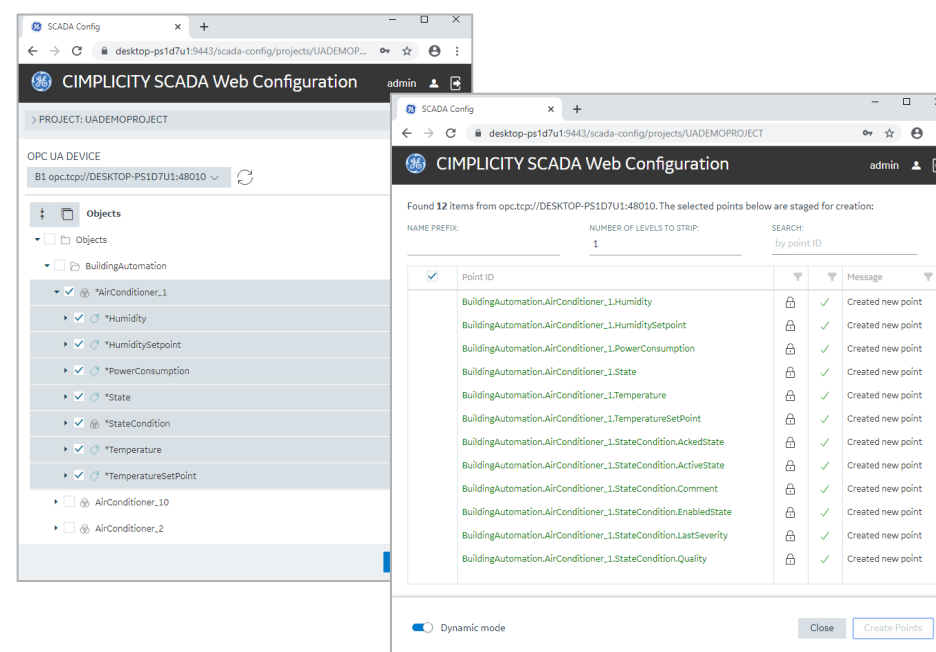
- CIMPLICITY 11 supports the following operating systems:
  - Microsoft Windows 10 (32 bit or 64 bit), P/E/U Editions
  - Microsoft Windows 10 IoT Enterprise (LTSC) – only full blown IoT version is supported. Not the core and mobile versions.
  - Microsoft Windows 8.1 (32 bit or 64 bit), P/E/U Editions
  - Microsoft Windows Server 2019
  - Microsoft Windows Server 2019 Cluster
  - Microsoft Windows Server 2016
  - Microsoft Windows Server 2016 Cluster
  - Microsoft Windows Server 2012 R2
- Supported: Microsoft SQL Server 2019, 2017, 2016, 2014; SQL Express 2017, 2016, 2014; Microsoft Visual Studio 2017; Oracle 12C

## Hardware Requirements

- Intel Core 2 Duo 3.0 GHz or better computer
- A minimum of 4 GB RAM
- A minimum of 40 GB of free hard drive space

Hardware and software requirements are representative and may vary by customer deployment. Please consult the [product documentation](#) for more details.

With CIMPLICITY, you can significantly reduce development time on database creation from OPC UA data sources.



Improve your efficiency with the High Performance HMI and SCADA capabilities in CIMPLICITY. With the latest innovation in HMI designs for efficiency, your operators can quickly identify problems and causes for a fast resolution.

LEARN MORE



# CIMPLICITY 11.1 from GE Digital

Precisely monitor and control every aspect of your industrial operations with High Performance HMI/SCADA

## Services

In the world of Industrial Internet of Things (IIoT), organizations are able to optimize productivity, reduce costs, and achieve Operational Excellence. While this is an exciting time for opportunity and growth, it can also bring on new challenges, questions, and uncertainty. No matter where you are on your IIoT journey, GE Digital has the right services offering for you.

[Advisory Services](#) We can help you plan and start your IIoT journey in a way that aligns to your specific business outcomes.

[Managed Services](#) We can help you maintain your critical machines from one of our remote locations around the world using model-based predictive analytic technology.

[Implementation Services](#) Our experienced global Automation partners can implement a collaborative, multi-generational program that marries your existing investments to the right enhancements and technology.

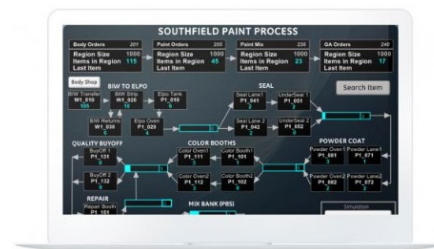
[Education Services](#) We specialize in education services to ensure that you're leveraging our solutions to the fullest extent with our training and certificate programs.

[Acceleration Plans](#) Let us help by ensuring that your business continues to operate at its highest efficiency, all while mitigating risks to your investments.

[Security Services](#) Our solutions provide industrial-grade security for a wide range of OT network and application topologies.

## Unified and Integrated Proficy Products for Your Digital Transformation Journey

GE Digital's unified and integrated Proficy suite helps you precisely monitor, control, and visualize every aspect of your operations, enabling operators to make the best decisions faster. Transforming your business requires foundational innovations that lay the groundwork for future success.



### [Tracker](#)

Accelerate time-to-market and improve just-in-sequence performance at global scale.



### [Dream Report](#)

Powerful reporting to help you improve performance and meet operational goals.



### [Proficy Operations Hub](#)

Guide operators with dynamic, interactive electronic work instructions and eSOPs for more consistent operations and optimized processes.



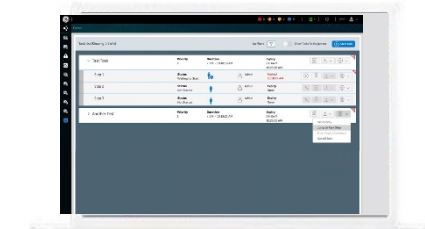
### [Proficy Plant Applications](#)

Maximize overall equipment effectiveness (OEE), improve production scheduling, and ensure product quality by leveraging real time production data.



### [Proficy Historian](#)

Optimize asset and plant performance through time-series and A&E industrial data collection and aggregation. Improve decision-making with advanced trend analysis.



### [Proficy Workflow](#)

Guide operators with dynamic, interactive electronic work instructions and eSOPs for more consistent operations and optimized processes.



### [iPower](#)

Achieve safer operations and efficient network management. iPower is electric utility SCADA made easy!

#### About GE

GE (NYSE: GE) is the world's Digital Industrial Company, transforming industry with software-defined machines and solutions that are connected, responsive and predictive. GE is organized around a global exchange of knowledge, the "GE Store," through which each business shares and accesses the same technology, markets, structure and intellect. Each invention further fuels innovation and application across our industrial sectors. With people, services, technology and scale, GE delivers better outcomes for customers by speaking the language of industry.

©2021 General Electric. All rights reserved. \*Trademark of General Electric. All other brands or names are property of their respective holders. Specifications are subject to change without notice. 09 2021

#### Contact

[www.ge.com/digital](http://www.ge.com/digital)